



Cauldwell

PROPERTY SERVICES



6 Goldhawk Road

Monkston Park, Milton Keynes, MK10 9QD

£825,000



6 Goldhawk Road

Monkston Park, Milton Keynes, MK10 9QD

£825,000



ENTRANCE HALL

Double glazed composite door to front. Stairs to first floor landing with understairs storage cupboard. Radiator.

LIVING ROOM

21'9" x 12'8" (6.63 x 3.87)

Double glazed French doors to side aspect. Double glazed window to front. Two radiators. Television point and internet point.

KITCHEN/DINING/FAMILY ROOM

22'11" x 10'9" (7.0 x 3.29)

Two double glazed windows to side. Double glazed window to front and rear. Fitted wall and base units with granite worksurfaces. Electric oven, grill and hob with extractor hood over. Integral fridge freezer and dishwasher. One and half bowl sink drainer unit. Radiator. Tiled flooring. Door to utility room.

UTILITY ROOM

7'2" x 6'0" (2.19 x 1.84)

Double glazed door to rear aspect. Fitted wall and base units with worksurfaces incorporating stainless steel sink drainer. Plumbing for washing machine and space for tumble dryer. Radiator. Tiled flooring. Wall mounted central heating boiler. Extractor fan.

DINING ROOM

12'6" x 10'9" (3.83 x 3.30)

Double glazed windows to front and side. Two doors to front entrance hall. Radiator.

CLOAKROOM

Double glazed obscure window to rear. Two piece suite comprising close coupled wc and wash hand basin. Radiator. Extractor fan. Part tiled walls.

FIRST FLOOR LANDING

Stairs from entrance hall. Radiator. Dog leg stairs to second floor landing.

BEDROOM ONE

15'2" x 12'9" (4.63 x 3.89)

Double glazed windows to front and side. Radiator. Built in double wardrobe with sliding doors. Door to ensuite.

ENSUITE

10'10" x 5'3" (3.31 x 1.62)

Double glazed obscure window to rear. Three piece suite comprising double shower cubicle with mains shower, wash hand basin and close coupled wc. Shaver point. Part tiled walls. Extractor fan. LED lighting. Radiator. Tiled flooring.

BEDROOM TWO

13'11" x 10'6" (4.25 x 3.21)

Double glazed windows to front and side. Radiator. Door to ensuite.

ENSUITE

6'7" x 5'4" (2.02 x 1.65)

Double glazed obscure window to front. Three piece suite comprising shower cubicle with mains shower, wash hand basin and close coupled wc. Radiator. Shaver point. Extractor fan. LED lighting. Part tiled walls. Tiled flooring.

BEDROOM THREE

11'10" x 10'11" (3.63 x 3.33)

Double glazed windows to front and side. Radiator.

BATHROOM

8'8" x 5'3" (2.66 x 1.61)

Double glazed obscure window to rear. Three piece suite comprising bath with shower attachment, close coupled wc and wash hand basin. Shaver point. Extractor fan. LED lighting. Part tiled walls. Tiled flooring.

STUDY/BEDROOM SIX

8'10" x 8'8" (2.70 x 2.66)

Double glazed window to rear. Radiator.

SECOND FLOOR LANDING

Stairs from first floor landing. Radiator.

BEDROOM FOUR

17'0" x 11'1" (5.20 x 3.38)

Double glazed window to front. Double glazed sky light window with fitted blinds to rear. Radiator. Walk in airing cupboard.

BEDROOM FIVE

17'1" x 10'10" (5.21 x 3.31)

Double glazed windows to side and rear. Radiator.

SHOWER ROOM

7'0" xs 5'1" (2.15 xs 1.56)

Double glazed sky light to rear with fitted blind. Three piece suite comprising shower cubicle with mains shower, wash hand basin and close coupled wc. Part tiled walls. LED lighting. Extractor fan. Shaver point Radiator Tiled flooring.

FRONT GARDEN

Small bedding planted area. Block paved driveway parking for six vehicles leading to detached double garage.

DOUBLE GARAGE

17'2" x 16'8" (5.24 x 5.10)

Two remote controlled electric roller doors to front. Power and light. Double glazed personal door to rear.

REAR GARDEN

Mainly laid to lawn with rear width patio area extending along side offering two seating areas, power points, gated access to front. Mature trees and plants.,

All measurements are approximate.

The area measurements are taken from the government EPC register.

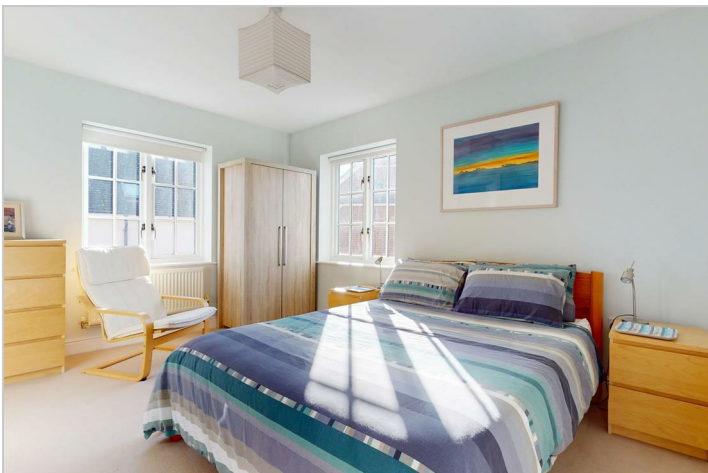
The mention of appliances and/or services within these sales particulars does not imply that they are in full efficient working order. Please note that any services, heating systems or appliances have not been tested and no warranty can be given or implied as to their working order. MORTGAGE & FINANCIAL - The Mortgage Store can provide you with up to the minute information on all available rates. To arrange an appointment,

telephone this office YOUR HOME IS AT RISK IF YOU DO NOT KEEP UP REPAYMENTS ON A MORTGAGE OR OTHER LOANS SECURED ON IT. Full quotation available on request. A suitable life policy may be required. Loans subject to status. Minimum age 18.

The above details have been submitted to our clients but at the moment have not been approved by them and we therefore cannot guarantee their accuracy and they are distributed on this basis. Please ensure that you have a copy of our approved details before committing yourself to any expense.

We routinely refer customers to Franklins solicitors, Gough Thorne and The Mortgage Store. It is your decision whether you choose to deal with them, in making that decision, you should know that we receive a referral fee in the region of £80 to £250 for recommending you to them

All clients are subject to identity and source of funds checks. We use a third party company to complete these for us. The charge is £60 inc vat per transaction which requires to be paid at your earliest convenience once your offer has been accepted, this enables us to conduct the verification checks we are obliged to do as per HMRC Anti Money Laundering guidelines.



Road Map



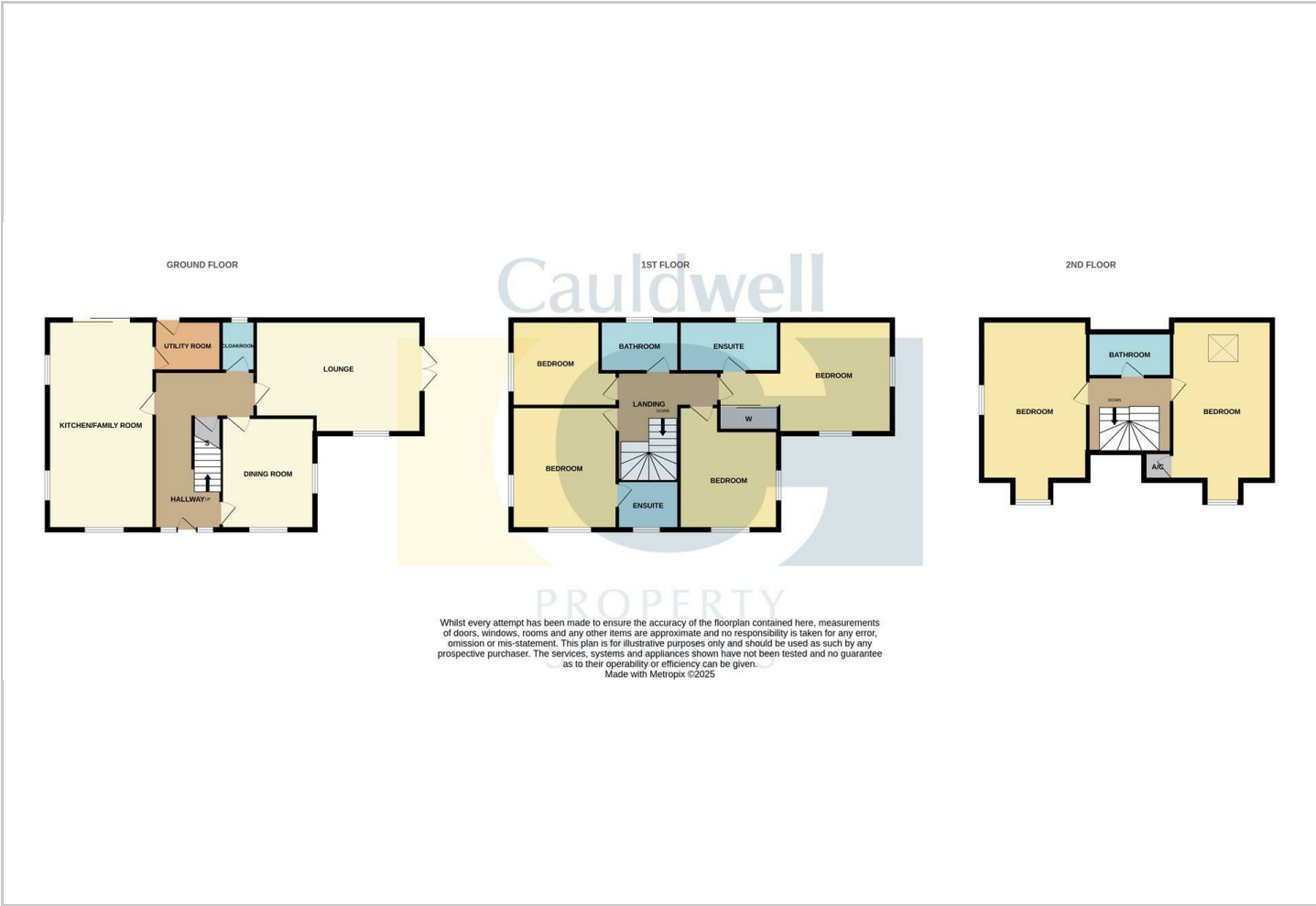
Hybrid Map



Terrain Map



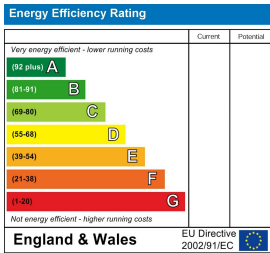
Floor Plan



Viewing

Please contact our Cauldwell Property Sales Office on 01908 304480 if you wish to arrange a viewing appointment for this property or require further information.

Energy Efficiency Graph



These particulars, whilst believed to be accurate are set out as a general outline only for guidance and do not constitute any part of an offer or contract. Intending purchasers should not rely on them as statements of representation of fact, but must satisfy themselves by inspection or otherwise as to their accuracy. No person in this firms employment has the authority to make or give any representation or warranty in respect of the property.